



Modern problems of training of Public Health specialists

Why a better performing health system needs a different
kind of professional and accordingly a different educational
approach

02-04-2019 Moscow

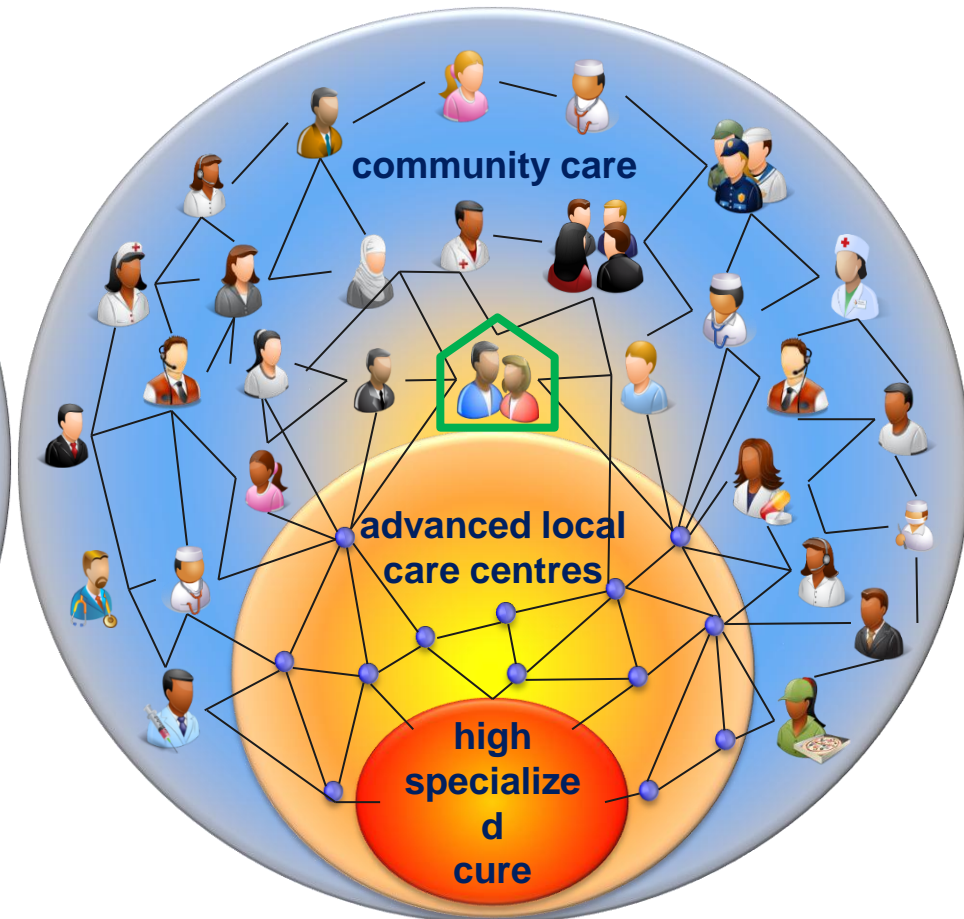
Dr. Nick Guldemon MD Eng
Professor Integrated Care & Technology

Paradigm shift

medical curative model

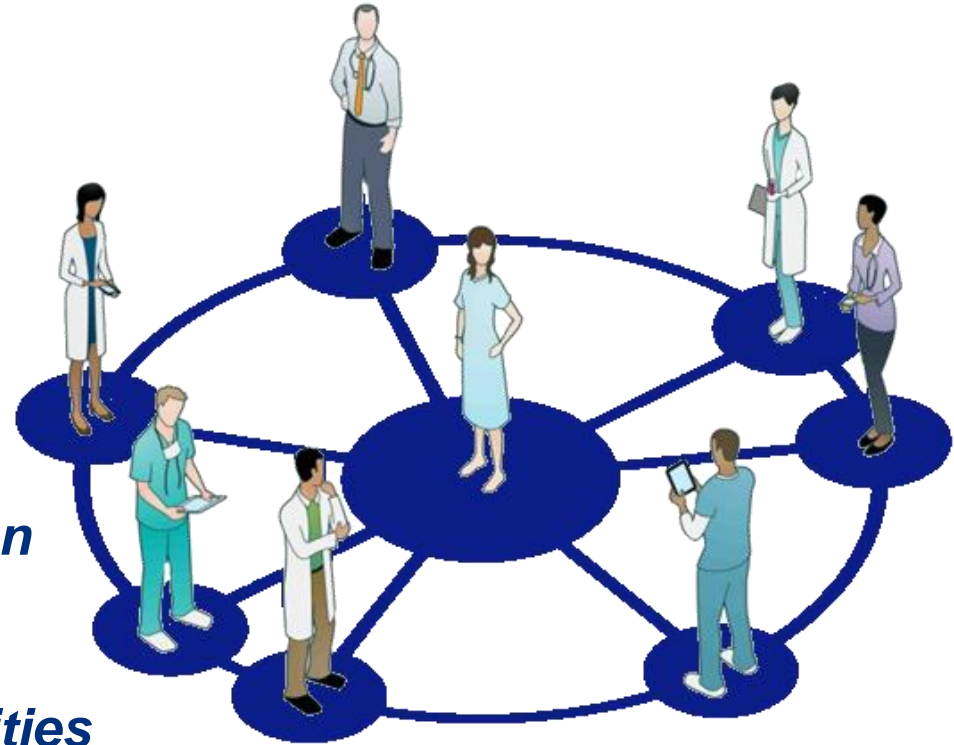


social (interconnected)
health perspective



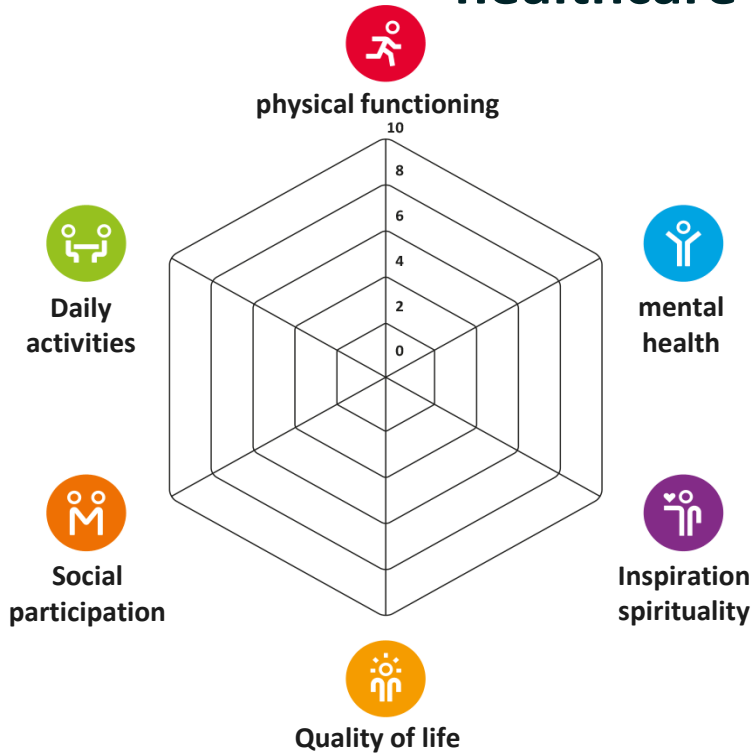
Person centred care

- anticipate '**needs**' rather than only **medical issues**
- maintain/increase **quality of life**
- personalised **treatment**
- further **integration & cooperation**
- coordinating **roles & responsibilities**

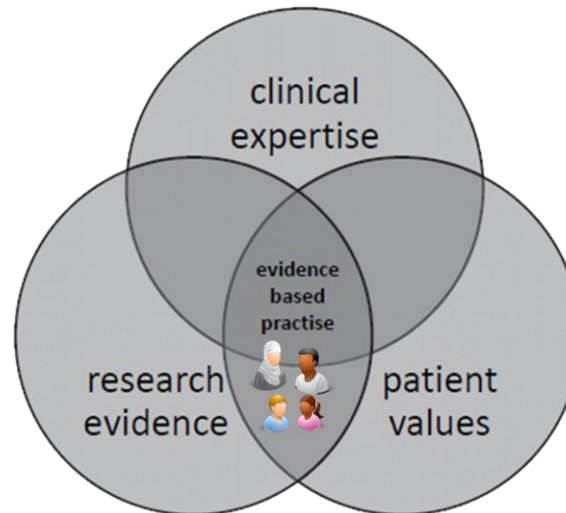
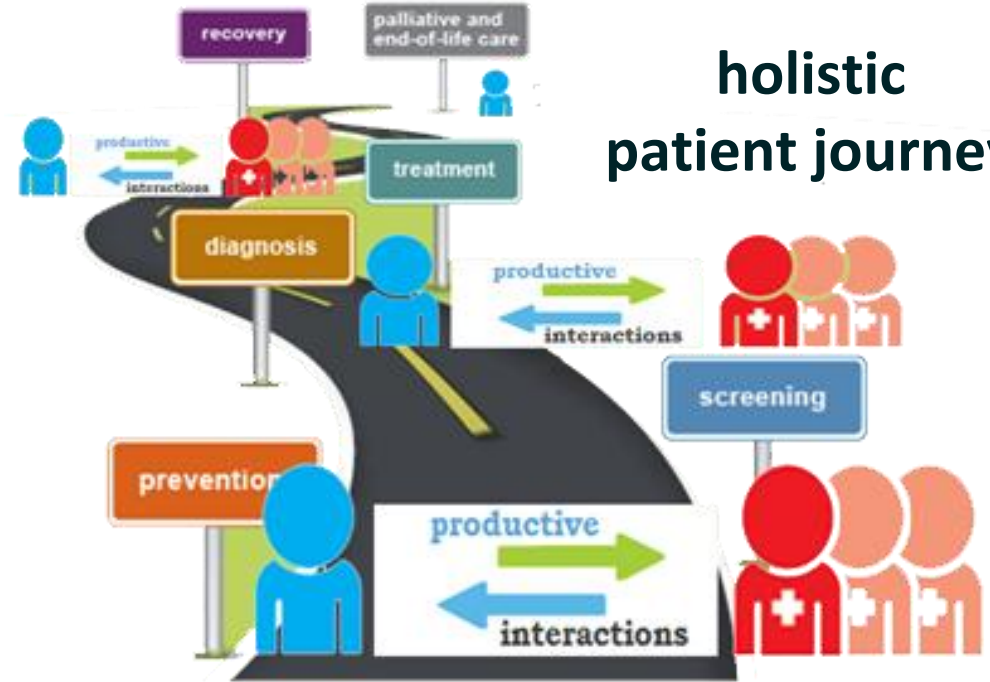


Important discussions in health

value based healthcare

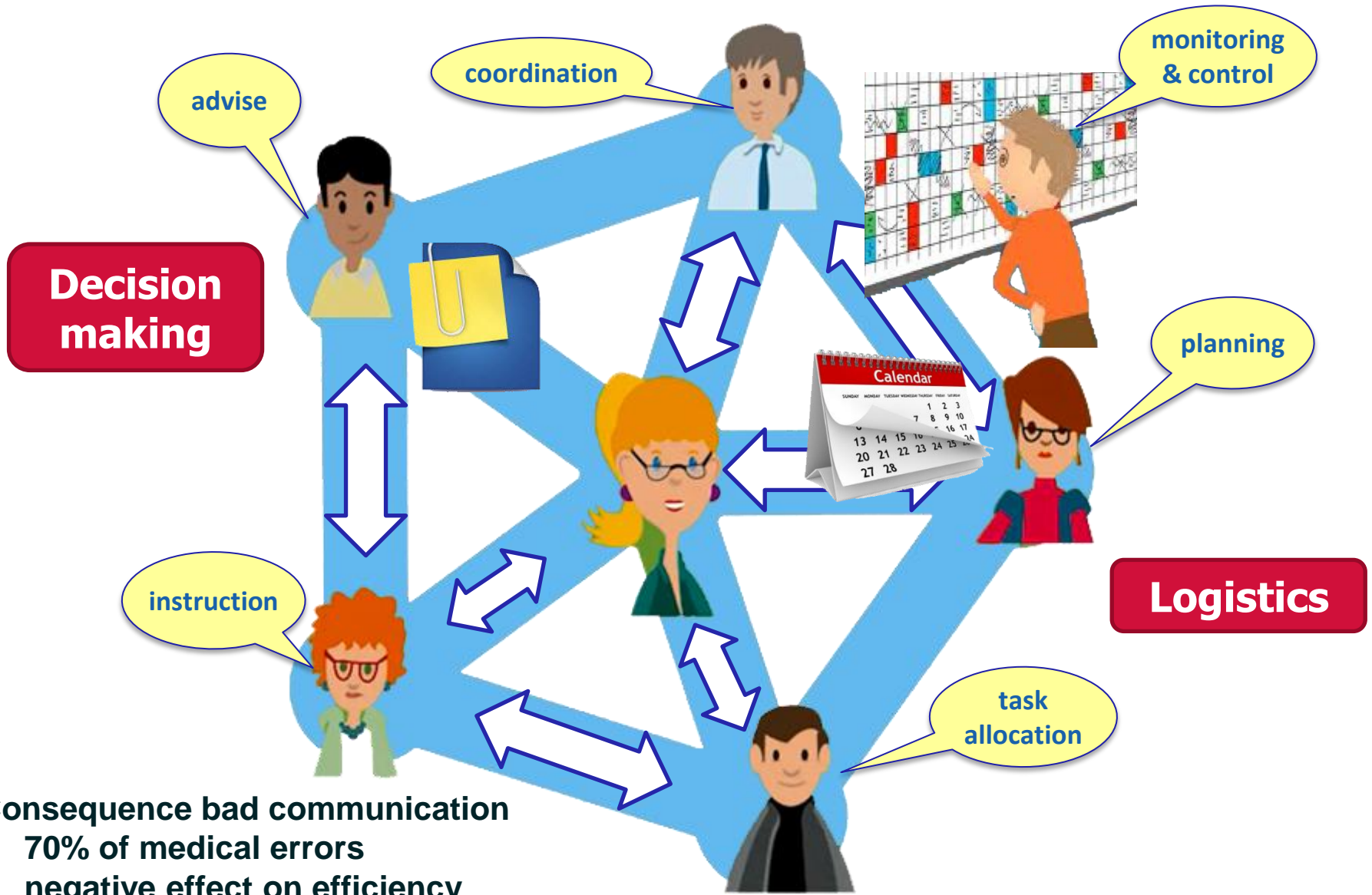


holistic patient journey



evidence based practise

Interconnected health team



Consequence bad communication

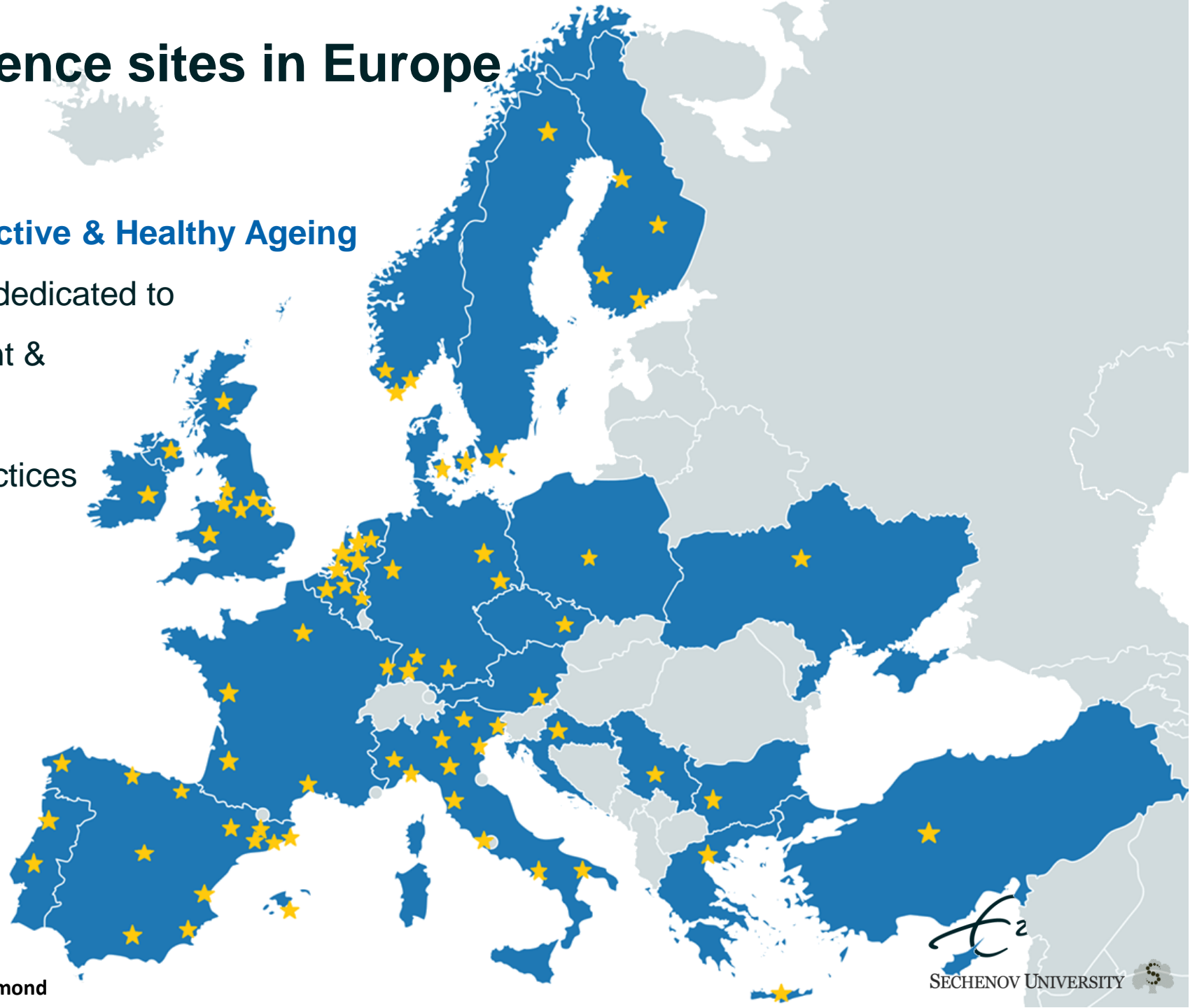
- 70% of medical errors
- negative effect on efficiency

Joint Commission on Accreditation of Healthcare Organizations

Reference sites in Europe

EIP on Active & Healthy Ageing

Regions dedicated to
implement &
up-scale
good practices





Thank you!

Make it happen.

Dr. Nick Guldemon

Email: guldemon@eshpm.eur.nl

Mobile: +31 6 42 393 696